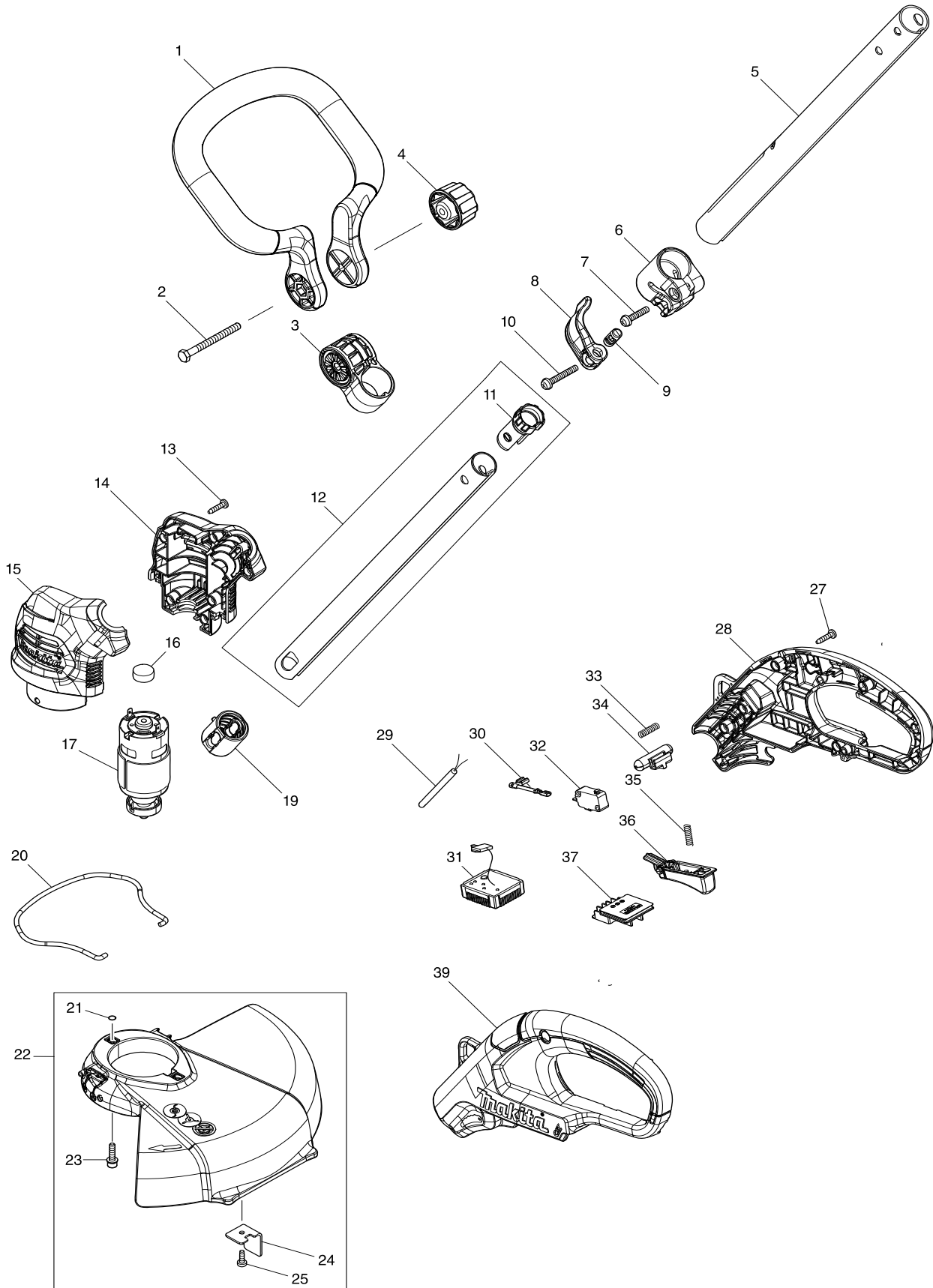




RU03



Products with multiple versions are listed in subsiding order with the newest version on top not indented.

Section	Fig. No.	Part No.	Description	RU03	Tech Bulletin	Notes
1	1	458505-8	FRONT GRIP	1		
1	2	921387-6	HEX. BOLT M6X65	1		
1	3	458260-2	GRIP HOLDER	1		
1	4	264072-1	THUMB NUT M6	1		
1	5	144945-3	PIPE 28 COMPLETE E	1		
1	6	458256-3	SLEEVE	1		
1	7	911243-8	PAN HEAD SCREW M5X25	1		
1	8	458257-1	LEVER	1		
1	9	319667-6	PIN 9	1		
1	10	911258-5	PAN HEAD SCREW M5X35	1		
1	11	458258-9	PIPE CAP	1		
1	12	135952-7	PIPE24 ASS'Y	1		INC. 11
1	13	266326-2	TAPPING SCREW 4X18	1		
1	14	183H91-5	MOTOR HOUSING SET	1		INC. 15
1	15	183H91-5	MOTOR HOUSING SET	1		INC. 14
1	16	421940-3	CAP	1		
1	17	629317-8	DC MOTOR	1		
1	19	424567-8	RUBBER SLEEVE 24	1		
1	20	327065-0	WIRE GUARD	1		
1	21	213023-1	O RING 4	2		
1	22	135950-1	PROTECTOR ASS'Y	1		INC. 21,23-25
1	23	911139-3	PAN HEAD SCREW M4X20 WG	2		
1	24	346555-4	CORD CUTTER	1		
1	25	266427-6	TAPPING SCREW 4X12	1		
1	27	266326-2	TAPPING SCREW 4X18	6		
1	28	183H89-2	HANDLE SET	1		INC. 39
1	29	699113-8	POWER SUPPLY CORD UNIT	1		
1	30	632L22-0	LEAD UNIT	1		
1	31	620780-8	CONTROLLER	1		
1	32	650744-8	SWITCH D3V-16-3C26	1		
1	33	231473-8	COMPRESSION SPRING 4	1		
1	34	452438-9	LOCK OFF BUTTON	1		
1	35	231473-8	COMPRESSION SPRING 4	1		

Products with multiple versions are listed in subsiding order with the newest version on top not indented.

Section	Fig. No.	Part No.	Description	RU03	Tech Bulletin	Notes
1	36	458259-7	SWITCH LEVER	1		
1	37	644813-5	TERMINAL	1		
1	39	183H89-2	HANDLE SET	1		INC. 28